



Reach for the Stars

# Leas Park Junior School

# NEWSLETTER

Week commencing 1st December 2025

Welcome to our weekly newsletter.

This week sees the start to our Christmas festivities.

Our beautiful Christmas tree is up in the hall and the children are making a start preparing a wonderful Christmas performance for you all.

There will be a Post Box in the hall for the children to put their cards in. Don't forget to add the name and class of the friends they are sending them to.



## Christmas Disco

Christmas Disco for lower school - Monday 08/12/25 from 6:00pm-7:30pm.

Christmas Disco for upper school - Tuesday 09/12/25 from 6:00pm-8:00pm,

A tuck shop will be available on the night, we will also be selling glow sticks from 50p to £1. The use of mobile phones is not permitted during the disco. All children must be collected by an adult and will not be allowed to leave otherwise. Open to Leas Park pupils only. To comply with fire regulations we need to know number of attendees by 05/12/25. Tickets will not be issued, your child will be added to an admission list once payment has been made.

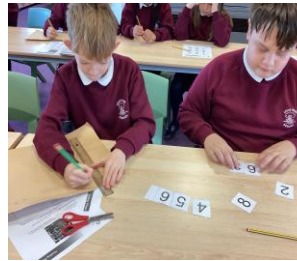
## Year 5 Nottingham University trip

Our Year 5's spent the day at Nottingham University and had lots of fun learning about Vikings and the medieval way of life. They really had fun dressing up!



# Figure it out Friday

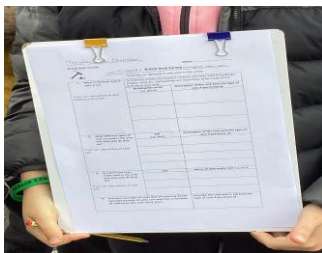
The children have had their first Figure it Out Friday last week in Mathematics. This was an opportunity for the children to explore, investigate, make links and talk about what they are finding out. Maths is full of lots of exciting tricks and plenty of connections to discover. A lot of fun was had by all. Our next one will be in January.



# Year 3 Rock Walk

Year 3 strolled down the High Street and over to St Edmund's Church, observing lots of local rock with different properties, types, and uses — both natural and man-made. Some of our eagle-eyed geologists even managed to spot signs of erosion!

By the time we returned, the children were very glad to be “home” after what they described as a “miles and miles” walk, with feet “dropping off” and arms sore from holding a clipboard! A brilliant effort all round and thank you to our photographers for some lovely pictures!



## Nottinghamshire's school holiday and term time dates consultation 2027-2030

Nottinghamshire County Council is currently consulting on proposed school term and holiday dates for the periods from 2027/2028 until 2029/2030 for community and voluntary controlled schools. The consultation is now open and runs between **29 September and 14 December 2025**.

Please consider the consultation and complete the online survey using the link below. This will allow Nottinghamshire County Council to consider the views of all consultees and ensure they are incorporated into the consultation feedback report which will be considered by Cabinet Member for Education and Special Educational Needs & Disabilities in Spring 2026.

The [consultation on school holiday and term time dates 2027-2030](#) outlines the proposed dates which follows the current model, including two weeks for the October half-term break, a varied Easter break and slight changes to the start and end dates for the academic year.

Nottinghamshire County Council would like to ensure that all stakeholders have an opportunity to comment. Comments can be submitted until 14 December 2025 by:

- [completing the online survey response form](#)
- emailing [schoolholidayconsultation@nottsc.gov.uk](mailto:schoolholidayconsultation@nottsc.gov.uk)

## School Christmas Fayre

Our Christmas Fayre is fast approaching, due to take place on Wednesday 3<sup>rd</sup> December 2025, straight after school at 3:15pm.

If you, or anyone you know, would like to hold a stall, please email the school office via [admin1@leasark.notts.sch.uk](mailto:admin1@leasark.notts.sch.uk) letting us know your name, your relationship with the school and what you would like to sell.

As always, we would like to ask for any donations of:

- Large chocolate bars
- Toiletries gift sets
- Wine bottles with screw caps – both full and used, please!
- Pre-loved teddies – clean and in good condition

No bric-a-brac or second-hand books, please.

All donations are as always, greatly appreciated. Please bring them to the school office, thank you.

# Reminders, messages and additional news – please read!!

## Waterproof coats

Please ensure your child brings a warm, waterproof coat to school every day, to keep them protected from the elements during our inclement English weather! All items of clothing should be labelled.

## Late collection

If you are aware that you are going to be late to collect your child at the end of the school day, please let us know in plenty of time and **before** the end of school at 3:15pm. When calls are received after the end of school, it is difficult for Reception Staff to get to the classrooms before the children have left.

## Changing dinners

Please note that the school office will need **one weeks' notice**, if you wish to change your child from school meals to sandwiches, or vice versa. Thank you.

## Pupil Information

Please ensure school have all of your current contact information up to date. If you change your name, telephone number or address, please let school know as soon as possible and ensure that we always have **at least two separate emergency contacts** for your child.

## Pupil Lateness and Absence

School starts at **08:45am**. Please ensure your child arrives on time and with all the uniform, equipment, lunch and snacks that they require for their day. If you are going to be late arriving to school, or if your child is not in full school uniform, please contact us on 01623 477629 to let us know why. If you know in advance that your child will not be in or will be late in the following day, the message system regarding pupil absence can be accessed at any time outside of office hours via our telephone number.

If your child needs to be out of school for any reason, please complete a 'Withdrawal from Learning Form' and submit to the school office asap, for authorisation at the discretion of the head teacher. These forms can be accessed via this link: <https://forms.office.com/e/v7wFmYp9J7> or paper copies are available from the leaflet stand in reception.

## Illness & Medications

If you do need to keep your child off school on a school day, please contact the school office on 01623 477629 **before 09:00am on the day they are due to be off**.

If you wish for your child to be given medication whilst at school, please complete and submit the form via this link: [Leas Park Junior School - Permission for School to Administer Medication](#)

**All medication needs to be both handed into school and collected, by an adult.**

## Staff Car Park

Please note the staff car park is for use **by staff only**. We have very limited space and quite often staff need to leave site and return at short notice. Extra vehicles can make manoeuvring dangerous and can also mean that spaces aren't available for staff who need to be here. Thank you for your understanding.

## Nut free school

In line with NCC policy regarding nut allergies, we do not allow any type of nuts including peanuts in school - either in packed lunches or in snacks. This also includes any nut based products including Nutella, other sandwich spreads containing nuts and any cereal bars that may contain nuts.

Thank you for your support.

## Snacks

Children are allowed to bring a healthy snack in with them to have during break time, for example fruit or vegetables. Please do not send in grab bags/multi packs of crisps, biscuits or sweets. Please ensure any food sent in to school is nut free. Thank you for your co-operation.

## Jewellery

Children should not be wearing jewellery to school, with the exception of a watch (not a smartwatch) and small stud earrings, which will need to be removed or covered during PE lessons. This is due to Health and Safety and the possibility of loss or damage.

# Leas Park Awards

Eco Class



Winner of the Week:

5H

**Well  
done  
everyone!**



## Leas Park Shining Stars

Class	Name
3B	Elijah T
3P	Dollie M
4C	Lily C
4G	Ellis N
5H	Darcy G
5J	Sadie H
6A	Ariela B
6C	Freya B
6P	Maisie P



## Zones of Regulation Champion

Class	Name
3B	Isobel L
3P	Henry T
4C	Grayson E
4G	Frances L
5H	Cameron S
5J	Tristan M
6A	Ava-Mae L
6C	Ella M
6P	Devon T



## Dinner Winners

Class	Name
3B	Barney R
3P	Freddie M
4C	Amelia M
4G	Maisie S
5H	Abigail W
5J	Annie B
6A	Ellie-Mae B
6C	Sophie S
6P	Ruby-Leigh H



Golden Tickets		
Class	Amount collected this week:	Running total so far this half term:
3B	0	7
3P	0	2
4C	2	9
4G	0	3
5H	0	11
5J	4	8
6A	0	1
6C	0	1
6P	0	1
Winner of the Week:		Overall winner this half term so far:
5J		5H

Class Dojo		
Class	Name	Amount awarded
6P	Coen D	25
6P	Charlie O	25
6P	Sid B	25
6P	Cohen W	25
6C	Aiden G	25
6C	Luca R	25
6C	Sophie S	25
4C	Oscar H	25
4C	Tafadzwa M	75
4G	Arthur S	25
4G	Callum-Jake H	25
4G	Yana P	25
4G	Kristens V	50
4G	Alfie W	50
3B	Aurora H	50
3B	Athena S	25
3B	Summer T	25
3B	Rio T	25
3B	Leanard W	25
3B	Teddie W	25
3P	Beau G	25
3P	Daisy G	25
3P	Dollie M	25
3P	Mason R	25
3P	Matilda W	25
3P	Taylor R	25
3P	Rosa C	25

## Attendance Award

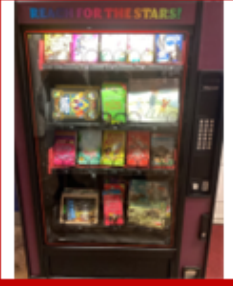
The Attendance Awards for w/c 24/11/2025 goes to **Class 6C** with 97.7%

Our current Attendance Policy can be found on our school website.

The whole school attendance this academic year to date is 94.47% - the national target is **96%**!

**Please help support us in raising our attendance.**

## Book Vending Machine



### Lower School Winner

Class	Name
4C	Esme W

### Upper School Winner

Class	Name
6C	Freya B



## Reading Certificates

Class	Name	No. of reads	Award given
6C	Sophie Si	75	Diamond
6P	Millie S	75	Diamond
6P	Pyper T	75	Diamond
5H	Cody B	25	Bronze
5H	Myla B	75	Diamond
5H	Charlie M	25	Bronze
4G	Arthur S	25	Bronze
4G	Scarlett B	50	Silver
4G	Theo S	50	Silver
4G	Bobby S	50	Silver
4C	Charlotte T	50	Silver
3P	Rosa C	50	Silver
3P	Ollie S	50	Silver
3B	Summer T	50	Silver
3B	Edward C	50	Silver
3B	Jaxon N	50	Silver
3B	Emily B	50	Silver
3B	Aurora H	50	Silver
3B	Connor B	50	Silver
3B	Lincoln R	25	Bronze
3B	Leo D	25	Bronze
6A	Ariela B	25	Bronze
6A	Feame C	25	Bronze
6A	Ellie-Mae B	25	Bronze
5J	Faith R	75	Diamond



### Maths Stars

Class	Name
3B	Faith K
	Lincoln R
3P	Oliver L
	Mason R
4C	Cody B
	Ayda C
4G	Erin L
	Bobby S
5H	Alexander P
	Adela R
5J	Faith R
	Bella W
6A	Fletcher S
	Joey Wh
6C	Mason F
	Freddy M
6P	Jenson M
	Penny P



### Pen Licences



Class	Name
5J	Tasmin M
5J	Beau B
5J	Ben S
5H	Esmæ R
5H	Ruby R

### Shout Outs

Class	Name	Reason & From
6C	Mason F	For working hard and persevering to achieve 10 out of 10 on his spellings! From Mrs Parker
4C	All of 4C	For being so amazing in our debate lesson this week - we were all so impressed with your enthusiasm and your wonderful sentences
All	Whole School	For having an amazing 'Parliament week' and really emerging yourselves in the learning- I am sure we have some budding MP in our midsts! From Mrs Ainley

Shout out!





**HOME  
START**  
Mansfield



# ELDERS & TODDLERS



FREE AND NO  
BOOKING REQ!

## OUR GROUPS (TERM TIME)

- MON 930-1130am LANGFORD RD LADYBROOK
- TUES 930-1130am TRINITY CHURCH M WOODHOUSE
- THURS 930-1130am OAK TREE FAMILY HUB
- THURS 1230-230PM STH MANSFIELD COMMUNITY CENTRE  
BELLAMY ROAD



Contact Us

01623 653391

[homestart.mansfield@gmail.com](mailto:homestart.mansfield@gmail.com)

Registered Charity 1108042

# Vocals

# **BIG YOUTH**

# **CHRISTMAS SING**



**A FUN WORKSHOP AND  
CONCERT OPEN TO  
CHILDREN AGED 5 - 14**

Saturday 13 December  
Nottingham Trent University  
Clifton NG11 8NS

Sunday 14 December  
Albert Hall, Nottingham NG1 5AA

**More details on overleaf**

*Music*  
for everyone

Registered Charity    Supported by:  
No. 1153412  
[music-for-everyone.org](http://music-for-everyone.org)

 **Bookwise**  
 Nottingham Trent  
University

# Christmas is Coming!

During the run up to Christmas, why not take a break and let your kids enjoy a fun-filled workshop on a Saturday afternoon, followed by a concert on Sunday for the whole family at the iconic Albert Hall in Nottingham.

Get into the Christmas spirit with lots of well-known Christmas songs including some familiar favourites from *The Snowman & Muppets Christmas Carol!* Young singers will be joined by other members of the MfE 'singing' family too on the concert day for this mega-Christmas extravaganza!

Singers will be divided into two age-group choirs:

**Vocals 1 (school yrs 1 - 3)**

**Vocals 2 (school yrs 4 - 8)**

Music packs, including lyrics and audio tracks, will be sent out approximately one month before the event, giving everyone the chance to learn the songs as best they can before the singing afternoon.

## **Saturday 13 December - Singing Afternoon**

Nottingham Trent University  
Clifton NG11 8NS  
All Groups: 2.00 - 5.00pm

## **Sunday 14 December - Concert**

Albert Hall, Nottingham NG1 5AA  
Rehearsal: 12.30 - 2.45pm  
Concert: 3.30 - 5.30pm

## **Workshop Fees: £25**

Less 10% discount if 2+ children from the same family

MfE runs a subsidised scheme for all courses, more details from the MfE office 0115 9589312

### **How to book**



Scan the QR code to go straight to the booking page.



Book over the phone Monday - Friday, 9am - 5pm



Ask us for a paper form to complete and post with a cheque payable to 'Music for Everyone'.

### **Contact**



admin@music-for-everyone.org



Music for Everyone, 10 Goose Gate, Hockley,  
Nottingham NG1 1FF



0115 958 9312



@MfENotts



@MfENotts



# Dates for your Diary

Please see below our main 'diary dates' so far for the academic year. We hope this will help with your diary planning.

**\*\*Please note these dates are subject to change and if this should be the case we will give as much notice as possible\*\***

## **Inset Days (school closed to children):**

Friday 27<sup>th</sup> March 2026

Monday 1<sup>st</sup> June 2026

Monday 27<sup>th</sup> July 2026

**Thursday 4<sup>th</sup> December** – Jingle Jog (Attendance list TBC)

**Wednesday 3<sup>rd</sup> December** – Christmas Fayre – all donations to the office asap, please

**W/C 8<sup>th</sup> December** – Last week of Autumn term clubs

**Monday 8<sup>th</sup> December** – Lower School Christmas Disco 6pm – 7:30pm

**Tuesday 9<sup>th</sup> December** – Upper School Christmas Disco – 6pm – 8pm

**Thursday 11<sup>th</sup> December** – Christmas Jumper Day & Christmas Dinner day

**Tuesday 16<sup>th</sup> December** – Lower School Christmas Performance 10am & 2pm

**Wednesday 17<sup>th</sup> December** – Upper School Christmas Performance 10am & 2pm

**Thursday 18<sup>th</sup> December** – Christmas Party Day

**Friday 19<sup>th</sup> December** – Christmas Activity Day – non uniform

**Monday 12<sup>th</sup> January** – Year 6 Palace Theatre Harry Potter Workshop (in school)

**Monday 23<sup>rd</sup> February** – Year 4 How to Train Your Dragon Workshop

**Tuesday 24<sup>th</sup> February** – Photographers in school – group photographs

**W/C 2<sup>nd</sup> March** - Assessment Week

**Tuesday 3<sup>rd</sup> March** – Year 3 Swimming starts (to 21<sup>st</sup> July – 9 weeks per class)

**Thursday 5<sup>th</sup> March** – World Book Day – theme to be announced

**Thursday 12<sup>th</sup> March** – Y3 Mother's Day Breakfast

**Friday 13<sup>th</sup> March** – Y4 Mother's Day Breakfast

**Mon 16<sup>th</sup> March** – Y5 Mother's Day Breakfast

**Tue 17<sup>th</sup> March** – Y6 Mother's Day Breakfast

**Wednesday 18<sup>th</sup> March** – Y4 Peak Mining Museum Trip (1 class, TBC)

**Thursday 19<sup>th</sup> March** – Y4 Peak Mining Museum Trip (1 class, TBC)

**Friday 20<sup>th</sup> March** – Comic Relief Red Nose Day

**Thursday 12<sup>th</sup> March** – Y3 Mother's Day Breakfast

**Friday 13<sup>th</sup> March** – Y4 Mother's Day Breakfast

**Mon 16<sup>th</sup> March** – Y5 Mother's Day Breakfast

**Tue 17<sup>th</sup> March** – Y6 Mother's Day Breakfast

**Wednesday 18<sup>th</sup> March** – Y4 Peak Mining Museum Trip (1 class, TBC)

**Thursday 19<sup>th</sup> March** – Y4 Peak Mining Museum Trip (1 class, TBC)

**Friday 20<sup>th</sup> March** – Comic Relief Red Nose Day

**Monday 23<sup>rd</sup> March** – Year 3 trip to Creswell Crags

**Wednesday 25<sup>th</sup> March** – Parent's Evening

**Thursday 26<sup>th</sup> March** – Parent's Evening



# Dates for your Diary continued ...

**Friday 27<sup>th</sup> March** – INSET day – school closed to children

**W/C 20<sup>th</sup> April** - Year 6 Mock SATS week

**W/C 11<sup>th</sup> May**– Year 6 SATS week

**Wednesday 20<sup>th</sup> – Friday 22<sup>nd</sup> May** – Year 5 Residential trip (one night per class)

**Monday 1<sup>st</sup> June** – INSET day – school closed to children

**W/C 1<sup>st</sup> June** – Year 4 Multiplication Times Tables Check week

**Friday 5<sup>th</sup> June** – Year 6 photographs

**Monday 8<sup>th</sup> June** – Year 3, Year 4, Year 5 assessment week

**Monday 15<sup>th</sup> – Wed 17<sup>th</sup> June** – Year 6 Residential trip

**Thursday 18<sup>th</sup> June** – Year 6 Father's Day Breakfast

**Friday 19<sup>th</sup> June** – Year 5 Father's Day Breakfast

**Monday 22<sup>nd</sup> June** – Year 4 Father's Day Breakfast

**Tuesday 23<sup>rd</sup> June** – Year 3 Father's Day Breakfast

**Friday 26<sup>th</sup> June** – Lower School Evening of Fun

**Thursday 2<sup>nd</sup> July** – Sports Day – Year 3&4 9.30am – 11.00am

**Thursday 2<sup>nd</sup> July** – Sports Day – Year 5&6 1.30pm – 3.00pm

**Wednesday 8<sup>th</sup> July** – Summer Fair

**Thursday 9<sup>th</sup> July** – Year 2 Meet the Teacher

**Friday 10<sup>th</sup> July** – Year 2 Meet the Teacher

**Friday 17<sup>th</sup> July** – Reports home

**Tuesday 21<sup>st</sup> July** – Year 6 Presentation Evening

**Wednesday 22<sup>nd</sup> July** – Picnic day

**Thursday 23<sup>rd</sup> July** – Talent Show

**Friday 24<sup>th</sup> July** – Toy day

**Mon 27<sup>th</sup> July** – INSET day – school closed to children

