



Reach for the Stars

# Leas Park Junior School

# NEWSLETTER

Week commencing 1st December 2025

## School Christmas Fayre

Our Christmas Fayre took place on Wednesday 3<sup>rd</sup> December and we raised a whopping **£797.15**.

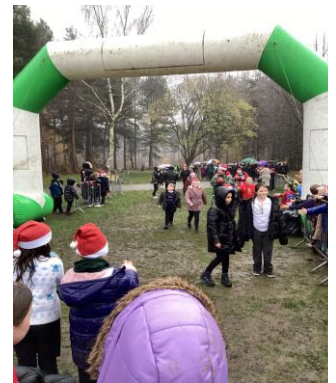
We would like to thank you for your attendance and support; it was lovely to see you all there.

A special mention goes out to Joshua L, 4G and his dad who ran the trading card stall, he very kindly donated all his takings to the school.



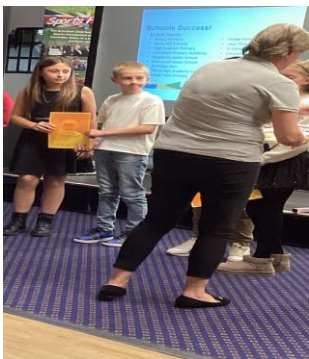
## Year 3 and 4 Jingle Jog

On Thursday 5<sup>th</sup> December, Miss Lynes, Miss Trafford and Mr Wood took a group of year 3 and 4 children to Sherwood Pines to participate in the Jingle Jog (an event organised by Mansfield School Games). They all wore Christmas jumpers; the children received a free Santa hat, and they ran 3km (some walked!) It was a fantastic event (despite the rain), and the children came back to school full of Christmas spirit and smiles!



## Sports Award Evening

On Monday 1<sup>st</sup> December, Miss Harley attended the Mansfield Sport Recognition Awards evening with 2 of our year 6 pupils to collect our Schools Games Mark Gold Award. It was a great opportunity to celebrate our award along with the wider community and local national/international sporting stars.



## Christmas Performances

Our school Christmas performances take place next week on Tuesday and Wednesday and the children are rehearsing hard to put on a outstanding show!

Don't forget you will need to book your ticket to the performance of your choosing using the link to the form that has been texted out. If you have not already booked a place and you do not have access to the link please contact us as soon as possible to avoid disappointment.

Please note it is 2 tickets per family.

## Nottinghamshire's school holiday and term time dates consultation 2027-2030

Nottinghamshire County Council is currently consulting on proposed school term and holiday dates for the periods from 2027/2028 until 2029/2030 for community and voluntary controlled schools. The consultation is now open and runs between **29 September and 14 December 2025**.

Please consider the consultation and complete the online survey using the link below. This will allow Nottinghamshire County Council to consider the views of all consultees and ensure they are incorporated into the consultation feedback report which will be considered by Cabinet Member for Education and Special Educational Needs & Disabilities in Spring 2026.

The [consultation on school holiday and term time dates 2027-2030](#) outlines the proposed dates which follows the current model, including two weeks for the October half-term break, a varied Easter break and slight changes to the start and end dates for the academic year.

Nottinghamshire County Council would like to ensure that all stakeholders have an opportunity to comment. Comments can be submitted until 14 December 2025 by:

- [completing the online survey response form](#)
- emailing [schoolholidayconsultation@nottscc.gov.uk](mailto:schoolholidayconsultation@nottscc.gov.uk)

## Gentle Reminders

We would like to remind you that children should be collected from school at 3.15pm, if you know you will be late, please let the office know as soon as possible so we can notify the classroom. We kindly ask you to encourage your to come back into school if they do not see their adult collecting them and notify a member of staff straightaway.

School uniform must be worn every day unless it is a P.E day. Uniform to consist of school jumper not any other jumper unless at break times and shoes to be plain black and not trainers.

If there are any issues please let the school office know.

# Reminders, messages and additional news – please read!!

## Waterproof coats

Please ensure your child brings a warm, waterproof coat to school every day, to keep them protected from the elements during our inclement English weather! All items of clothing should be labelled.

## Late collection

If you are aware that you are going to be late to collect your child at the end of the school day, please let us know in plenty of time and **before** the end of school at 3:15pm. When calls are received after the end of school, it is difficult for Reception Staff to get to the classrooms before the children have left.

## Changing dinners

Please note that the school office will need **one weeks' notice**, if you wish to change your child from school meals to sandwiches, or vice versa. Thank you.

## Pupil Information

Please ensure school have all of your current contact information up to date. If you change your name, telephone number or address, please let school know as soon as possible and ensure that we always have **at least two separate emergency contacts** for your child.

## Pupil Lateness and Absence

School starts at **08:45am**. Please ensure your child arrives on time and with all the uniform, equipment, lunch and snacks that they require for their day. If you are going to be late arriving to school, or if your child is not in full school uniform, please contact us on 01623 477629 to let us know why. If you know in advance that your child will not be in or will be late in the following day, the message system regarding pupil absence can be accessed at any time outside of office hours via our telephone number.

If your child needs to be out of school for any reason, please complete a 'Withdrawal from Learning Form' and submit to the school office asap, for authorisation at the discretion of the head teacher. These forms can be accessed via this link: <https://forms.office.com/e/v7wFmYp9J7> or paper copies are available from the leaflet stand in reception.

## Illness & Medications

If you do need to keep your child off school on a school day, please contact the school office on 01623 477629 **before 09:00am on the day they are due to be off.**

If you wish for your child to be given medication whilst at school, please complete and submit the form via this link:

[Leas Park Junior School - Permission for School to Administer Medication](#)

**All medication needs to be both handed into school and collected, by an adult.**

## Staff Car Park

Please note the staff car park is for use **by staff only**. We have very limited space and quite often staff need to leave site and return at short notice. Extra vehicles can make manoeuvring dangerous and can also mean that spaces aren't available for staff who need to be here. Thank you for your understanding.

## Nut free school

In line with NCC policy regarding nut allergies, we do not allow any type of nuts including peanuts in school - either in packed lunches or in snacks. This also includes any nut based products including Nutella, other sandwich spreads containing nuts and any cereal bars that may contain nuts.

Thank you for your support.

## Snacks

Children are allowed to bring a healthy snack in with them to have during break time, for example fruit or vegetables. Please do not send in grab bags/multi packs of crisps, biscuits or sweets. Please ensure any food sent in to school is nut free. Thank you for your co-operation.

## Jewellery

Children should not be wearing jewellery to school, with the exception of a watch (not a smartwatch) and small stud earrings, which will need to be removed or covered during PE lessons. This is due to Health and Safety and the possibility of loss or damage.

# Leas Park Awards


Eco Class

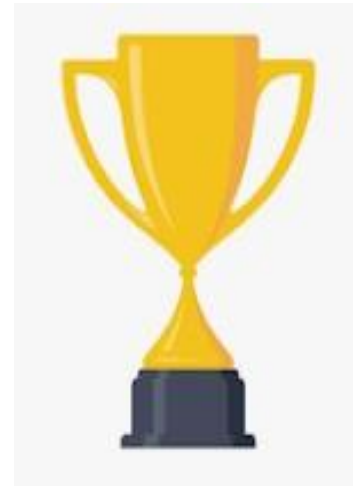


Winner of the Week:

3B

## Leas Park Shining Stars

	Class	Name
	3B	Eissa J
	3P	Luna B
	4C	Amelia S
	4G	Jack H
	5H	Benjamin B
	5J	Esme L
	6A	Lyla E
	6C	Freya G
	6P	Joseph O



Well  
done  
everyone!

## Zones of Regulation Champion



Class	Name
3B	Rory M
3P	Freddie M
4C	Phoebe R
4G	Emily C
5H	Peyton F
5J	Scarlett S
6A	Ariela B
6C	Jacob S
6P	Charlie O

## Star Writers



Class	Name
3B	Victoria K
	Teddie W
3P	Henry T
	Zac G
4C	Aria C
	Ethan H
4G	Alfie W
	Joshua L
5H	Alexander P
	Myla B
5J	Riley-James B
	Harry B
6A	Evie C
	Joshua S
6C	Jayce H
	Billy T
6P	Millie S
	Stephen G

### Golden Tickets



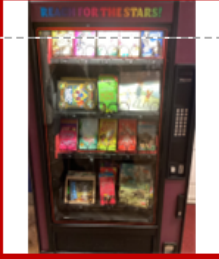
Class	Amount collected this week:	Running total so far this half term:
3B	1	8
3P	0	2
4C	1	10
4G	1	4
5H	0	11
5J	0	8
6A	1	2
6C	0	1
6P	0	1
<b>Winner of the Week:</b>		<b>Overall winner this half term so far:</b>
3B, 4C, 4G, 6A		5H

### Dojo!



Class	Name	Amount awarded
6P	Scarlet D	25
6P	Ben G	25
6P	Lydia H	25
6P	Joseph O	25
6P	Maisie P	25
6P	Devon T	25
6P	Pyper T	25
6P	Ruby-Leigh H	50
5J	Missy B	25
4C	Aria C	25
4C	Freyja A	25
4C	Amelia M	25
4C	Aubree W	25
4C	Phoebe R	50
4C	Amelia S	75
4G	Erynn W	50
4G	Ellis N	50
3B	Connor B	25
3B	Dexter C	25
3B	Jeremyl B	25
3B	Olivia J	25
3B	Jaxon N	25
3B	Barney R	25
3B	Owen S	25
6C	Jacob L	25
6C	Billy T	25
6C	Mason F	25
6C	Freya B	25
6C	Jacob S	25
3P	Lena P	25

## Book Vending Machine



### Lower School Winner

Class	Name
4G	Lorenzo D

### Upper School Winner

Class	Name
6A	Mason M




## Reading Certificates

Class	Name	No. of reads	Award given
6A	Lyla E	75	Diamond
6A	Ava- Mae L	25	Bronze
6A	William R	25	Bronze
6P	Ruby-Leigh H	25	Bronze
6P	Scarlet D	50	Silver
6P	Devon T	50	Silver
6C	Freya G	50	Silver
6C	Freddie M	50	Silver
4G	Finley-Anthony B	25	Bronze
4G	Callum-Jake H	25	Bronze
4G	Ronnie A	50	Silver
4G	Ellis N	50	Silver
4G	Alfie W	50	Silver
4G	Emily C	75	Diamond
4G	Max H	75	Diamond
4C	Reeva S	25	Bronze
4C	Amelia S	50	Silver
4C	Gracie H	50	Silver
4C	Winnie G	50	Silver
4C	Arla D	50	Silver
5H	Ella C	50	Silver
5H	Alex P	50	Silver
5J	Fearne M	75	Diamond
5J	Kyla M	50	Silver
3B	Teddie W	50	Silver
3B	Barney R	50	Silver
3B	Dexter C	50	Silver
3B	Lunar-Rae B	25	Bronze
3p	Ezra J	50	Silver
3p	Effia W	50	Silver



### Dinner Winners



Class	Name
3B	Sylvester P
3P	Amelia H
4C	Oliver W
4G	Yana P
5H	Esmæ R
5J	Lucy B
6A	Joshua S
6C	Sophie S
6P	Logan S

### Shout Outs

Class	Name	Reason & From
6C	Abigail M and Pippa B	Mrs Parker is so proud of how creative these two have been with learning their spellings, they have been learning them at together at home and creating colourful posters.

### Attendance Award

The Attendance Awards for **w/c 01/12/2025** goes to **Class 6C** with 97.27%

Our current Attendance Policy can be found on our school website.

The whole school attendance this academic year to date is 94.4% - the national target is **96%**!

**Please help support us in raising our attendance.**



**HOME  
START**  
Mansfield



# ELDERS & TODDLERS



FREE AND NO  
BOOKING REQ!

## OUR GROUPS (TERM TIME)

- MON 930-1130am LANGFORD RD LADYBROOK
- TUES 930-1130am TRINITY CHURCH M WOODHOUSE
- THURS 930-1130am OAK TREE FAMILY HUB
- THURS 1230-230PM 5TH MANSFIELD COMMUNITY CENTRE  
BELLAMY ROAD



Contact Us

01623 653391

[homestart.mansfield@gmail.com](mailto:homestart.mansfield@gmail.com)

Registered Charity 1108042

# Christmas is Coming!

During the run up to Christmas, why not take a break and let your kids enjoy a fun-filled workshop on a Saturday afternoon, followed by a concert on Sunday for the whole family at the iconic Albert Hall in Nottingham.

Get into the Christmas spirit with lots of well-known Christmas songs including some familiar favourites from *The Snowman & Muppets Christmas Carol!* Young singers will be joined by other members of the MfE 'singing' family too on the concert day for this mega-Christmas extravaganza!

Singers will be divided into two age-group choirs:

**Vocals 1 (school yrs 1 - 3)**

**Vocals 2 (school yrs 4 - 8)**

Music packs, including lyrics and audio tracks, will be sent out approximately one month before the event, giving everyone the chance to learn the songs as best they can before the singing afternoon.

## **Saturday 13 December - Singing Afternoon**

Nottingham Trent University  
Clifton NG11 8NS  
All Groups: 2.00 - 5.00pm

## **Sunday 14 December - Concert**

Albert Hall, Nottingham NG1 5AA  
Rehearsal: 12.30 - 2.45pm  
Concert: 3.30 - 5.30pm

## **Workshop Fees: £25**

Less 10% discount if 2+ children from the same family

MfE runs a subsidised scheme for all courses, more details from the MfE office 0115 9589312

### **How to book**



Scan the QR code to go straight to the booking page.



Book over the phone Monday - Friday, 9am - 5pm



Ask us for a paper form to complete and post with a cheque payable to 'Music for Everyone'.

### **Contact**



admin@music-for-everyone.org



Music for Everyone, 10 Goose Gate, Hockley,  
Nottingham NG1 1FF



0115 958 9312



@MfENotts



@MfENotts



# Vocals

# **BIG YOUTH**

# **CHRISTMAS SING**



**A FUN WORKSHOP AND  
CONCERT OPEN TO  
CHILDREN AGED 5 - 14**

Saturday 13 December  
Nottingham Trent University  
Clifton NG11 8NS

Sunday 14 December  
Albert Hall, Nottingham NG1 5AA

**More details on overleaf**

*Music*  
for everyone

Registered Charity    Supported by:  
No. 1153412  
[music-for-everyone.org](http://music-for-everyone.org)

 **Bookwise**  
 Nottingham Trent  
University

# Dates for your Diary

Please see below our main 'diary dates' so far for the academic year. We hope this will help with your diary planning.

**\*\*Please note these dates are subject to change and if this should be the case we will give as much notice as possible\*\***

## **Inset Days (school closed to children):**

Friday 27<sup>th</sup> March 2026

Monday 1<sup>st</sup> June 2026

Monday 27<sup>th</sup> July 2026

**W/C 8<sup>th</sup> December** – Last week of Autumn term clubs

**Monday 8<sup>th</sup> December** – Lower School Christmas Disco 6pm – 7:30pm

**Tuesday 9<sup>th</sup> December** – Upper School Christmas Disco – 6pm – 8pm

**Thursday 11<sup>th</sup> December** – Christmas Jumper Day & Christmas Dinner day

**Tuesday 16<sup>th</sup> December** – Lower School Christmas Performance 10am & 2pm

**Wednesday 17<sup>th</sup> December** – Upper School Christmas Performance 10am & 2pm

**Thursday 18<sup>th</sup> December** – Christmas Party Day

**Friday 19<sup>th</sup> December** – Christmas Activity Day – non uniform

**Monday 12<sup>th</sup> January** – Year 6 Palace Theatre Harry Potter Workshop (in school)

**Monday 23<sup>rd</sup> February** – Year 4 How to Train Your Dragon Workshop

**Tuesday 24<sup>th</sup> February** – Photographers in school – group photographs

**W/C 2<sup>nd</sup> March** - Assessment Week

**Tuesday 3<sup>rd</sup> March** – Year 3 Swimming starts (to 21<sup>st</sup> July – 9 weeks per class)

**Thursday 5<sup>th</sup> March** – World Book Day – theme to be announced

**Thursday 12<sup>th</sup> March** – Y3 Mother's Day Breakfast

**Friday 13<sup>th</sup> March** – Y4 Mother's Day Breakfast

**Mon 16<sup>th</sup> March** – Y5 Mother's Day Breakfast

**Tue 17<sup>th</sup> March** – Y6 Mother's Day Breakfast

**Wednesday 18<sup>th</sup> March** – Y4 Peak Mining Museum Trip (1 class, TBC)

**Thursday 19<sup>th</sup> March** – Y4 Peak Mining Museum Trip (1 class, TBC)

**Friday 20<sup>th</sup> March** – Comic Relief Red Nose Day

**Thursday 12<sup>th</sup> March** – Y3 Mother's Day Breakfast

**Friday 13<sup>th</sup> March** – Y4 Mother's Day Breakfast

**Mon 16<sup>th</sup> March** – Y5 Mother's Day Breakfast

**Tue 17<sup>th</sup> March** – Y6 Mother's Day Breakfast

**Wednesday 18<sup>th</sup> March** – Y4 Peak Mining Museum Trip (1 class, TBC)

**Thursday 19<sup>th</sup> March** – Y4 Peak Mining Museum Trip (1 class, TBC)

**Friday 20<sup>th</sup> March** – Comic Relief Red Nose Day

**Monday 23<sup>rd</sup> March** – Year 3 trip to Creswell Crags

**Wednesday 25<sup>th</sup> March** – Parent's Evening

**Thursday 26<sup>th</sup> March** – Parent's Evening

## Dates for your Diary continued ...

- Friday 27<sup>th</sup> March** – INSET day – school closed to children
- W/C 20<sup>th</sup> April** - Year 6 Mock SATS week
- W/C 11<sup>th</sup> May**– Year 6 SATS week
- Tuesday 19<sup>th</sup> May** – Year 6 photographs **\*this has been changed from 5<sup>th</sup> June\***
- Wednesday 20<sup>th</sup> – Friday 22<sup>nd</sup> May** – Year 5 Residential trip (one night per class)
- Monday 1<sup>st</sup> June** – INSET day – school closed to children
- W/C 1<sup>st</sup> June** – Year 4 Multiplication Times Tables Check week
- Friday 5<sup>th</sup> June** – Year 6 photographs
- Monday 8<sup>th</sup> June** – Year 3, Year 4, Year 5 assessment week
- Monday 15<sup>th</sup> – Wed 17<sup>th</sup> June** – Year 6 Residential trip
- Thursday 18<sup>th</sup> June** – Year 6 Father’s Day Breakfast
- Friday 19<sup>th</sup> June** – Year 5 Father’s Day Breakfast
- Monday 22<sup>nd</sup> June** – Year 4 Father’s Day Breakfast
- Tuesday 23<sup>rd</sup> June** – Year 3 Father’s Day Breakfast
- Friday 26<sup>th</sup> June** – Lower School Evening of Fun
- Thursday 2<sup>nd</sup> July** – Sports Day – Year 3&4 9.30am – 11.00am
- Thursday 2<sup>nd</sup> July** – Sports Day – Year 5&6 1.30pm – 3.00pm
- Wednesday 8<sup>th</sup> July** – Summer Fair
- Thursday 9<sup>th</sup> July** – Year 2 Meet the Teacher
- Friday 10<sup>th</sup> July** – Year 2 Meet the Teacher
- Friday 17<sup>th</sup> July** – Reports home
- Tuesday 21<sup>st</sup> July** – Year 6 Presentation Evening
- Wednesday 22<sup>nd</sup> July** – Picnic day
- Thursday 23<sup>rd</sup> July** – Talent Show
- Friday 24<sup>th</sup> July** – Toy day
- Mon 27<sup>th</sup> July** – INSET day – school closed to children



