



# NEWSLETTER

Week commencing 29th June 2026

Welcome to our Newsletter,

It feels like the temperatures may have returned to normal which is great news for the start of our summer events here at Leas Park! We are looking forward to seeing lots of you here for **Sports Day on Thursday** - please see below for more detailed information about the day.

We are also excited about **Friday's non-uniform day** - reminder below about donations for the summer fayre in return for your child coming to school in their own clothes.

This week also sees some Transition Days begin for some of our Year 6's as they prepare for their move up to secondary school.

## Sports Day – Thursday 2<sup>nd</sup> July

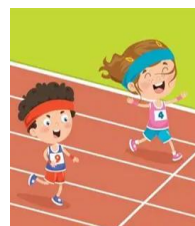
This year, our track will again be accessed via our school field, at the rear of the school. On arrival, please follow the path around the left hand side of the school and proceed diagonally across the field. Once through the wooden gate, follow the path at the back of Manor Academy and take your place at the side of the track.

**Lower School start at 9:30am.** Parents may wait in the front playground after school drop-off.

**Upper School start at 1:30pm.** Parents may arrive from 1:10pm.

Please send your child to school wearing their PE kit, with their refillable water bottle and a sun hat. Please also ensure they are wearing suncream and have some with them that they can re-apply themselves.

We wish all our pupils the best of luck!



## Non-Uniform day – Friday 3<sup>rd</sup> July

Polite reminder that it is our **non-uniform day this Friday (3<sup>rd</sup> July)**. In return for your child coming to school in their own clothes, **we ask that you please donate a prize for our upcoming Summer Fayre.**

We will be holding lots of stalls at the Summer Fayre on Wednesday 15th July and so are asking for donations of:

- Chocolate or sweets
- Bottles of anything (pop, ketchup, bubble bath, wine etc)
- Toiletries/Bath/Body products/sets



We politely ask that you only donate new items. Thank you in advance for your support.

## Summer Fayre – Wednesday 15<sup>th</sup> July

We will be holding our annual Summer Fayre here at Leas Park on Wednesday 15<sup>th</sup> July.

We are excited about the stalls that will be out on our school field on the day, helping us raise funds that we put towards trips, special events and rewards for our all of pupils over the academic year.

Please be aware that this is a cash only event so get saving your change!



The poster features a blue sky background with colorful bunting at the top. The main title 'Leas Park Junior School Summer Fayre' is written in large, bold, purple and blue letters. Below the title, the date and time 'Wednesday 15th July • From 3.30pm' are in green. A red banner below that says 'Bring the whole family along for an afternoon packed with treats and exciting summer fun!'. On the left, a vertical list of attractions includes: Inflatable Slide, Fire Engine, Raffle, Tombola, Hook-a-Duck, Craft Stalls, and Refreshments. On the right, it says 'Burgers and hotdogs by Brew & Brunch & Ice Cream Van' next to a small logo for Leas Park Junior School. At the bottom, a dark purple banner contains the text: 'All funds raised go back into school to enable our children to engage in exciting activities and enjoy treats throughout the year'.

## Family Picnic – Wednesday 22<sup>nd</sup> July 2026

We will be holding our whole school family picnic on Wednesday 22<sup>nd</sup> July, 12.00 – 1.00pm.

If you can nip out of work, pop across to school and spend your lunch break with your child we would love to see you! Please bring along your own picnic/lunch to eat with them. We will open the gates at 11.45am. The field must be vacated by 1.00pm.

Hopefully the weather is fine and you can bring a blanket to sit on whilst you eat out on the school field. The whole school will be joining the picnic and it promises to be a fun, family occasion.

If your child has a school dinner we will be providing their picnic from our kitchen. **Please see the message we have sent in Arbor with regard to ordering their picnic lunch.**

If your child currently brings sandwiches, there is no change to their normal arrangements.

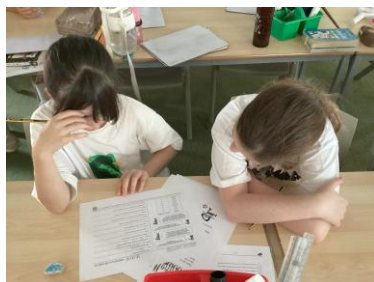
We hope this will be a lovely lunchtime for everyone and thank you for supporting us.



# Figure It Out Friday – World Cup Edition



Everyone in Leas Park got into the football spirit for this month's Figure it Out Friday. Every class used football as a basis for exploring many mathematical ideas including statistics, shape, logic puzzles and much more.



# Zones of Regulation

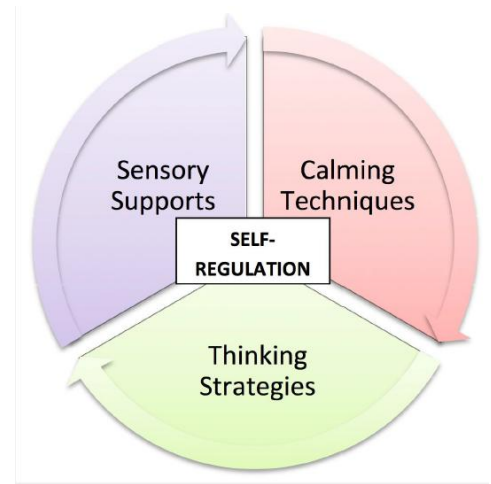
## ZONES of REGULATION

### Understanding Tools

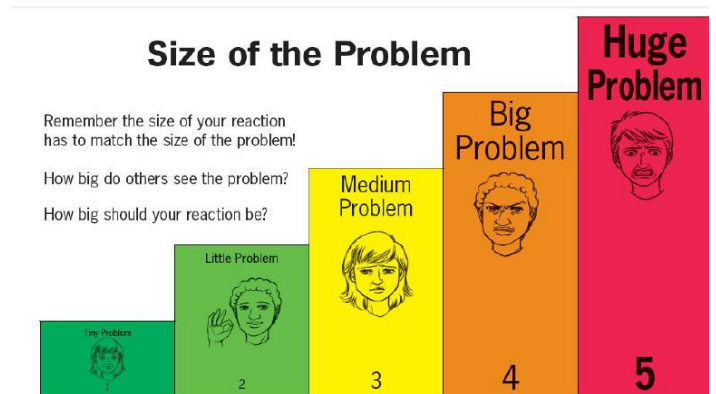
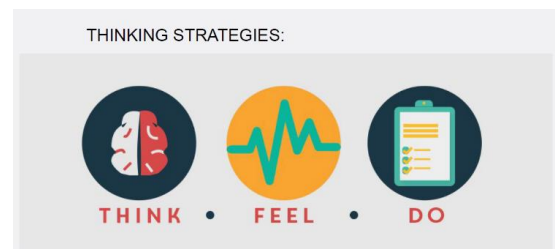
As part of developing the children's understanding of *Zones Tools*, we have explored different ways to help ourselves regulate our emotions and feelings. We have discussed how different strategies can support us, including:

- sensory strategies
- **thinking strategies**
- calming techniques

This week, we will focus on *sensory strategies* — activities or experiences that can help children feel calmer, more organised, or more ready to learn. These can be particularly helpful when children are feeling in the Blue, Yellow, or Red Zones.



WHAT CAN I SAY TO MYSELF?	
INSTEAD OF...	TRY THINKING...
-I'M NOT GOOD AT THIS	-WHAT AM I MISSING?
-I'M AWESOME AT THIS	-I'M ON THE RIGHT TRACK
-I GIVE UP!	-I'LL USE SOME OF THE STRATEGIES I'VE LEARNED
-THIS IS TOO HARD	-THIS MAY TAKE SOME TIME AND EFFORT
-I CAN'T MAKE THIS ANY BETTER	-I CAN ALWAYS IMPROVE, I'LL KEEP TRYING
-I CAN'T DO MATH	-I'M GOING TO TRAIN MY BRAIN IN MATH
-I MADE A MISTAKE	-MISTAKES HELP ME IMPROVE
-I'LL NEVER BE AS SMART AS HER	-I'M GOING TO FIGURE OUT WHAT SHE DOES AND TRY IT
-IT'S GOOD ENOUGH	-IS THIS REALLY MY BEST WORK?



Not every strategy works for every child, so we'd encourage children to explore what works best for them and to begin building their own "toolkit" of helpful strategies. You may find some of these ideas useful to try at home too.

## Car park safety concern – Safe Haven Day Nursery

Our school has recently received the email below from Safe Haven Day Nursery regarding increasing safety concerns within the shared church and nursery car park:

‘We have always kept the gates open so that the wider community can make use of the car park but the current situation is becoming unsafe and cannot continue as it is.



During school drop-off and pick-up times, the car park regularly becomes gridlocked. Vehicles are parking in the middle of the car park rather than in marked bays, blocking access for other vehicles and preventing people from entering or leaving safely. Cars are also stopping and parking directly outside the nursery gates, creating poor visibility for families and children.

This is a serious health and safety concern. In the event of a fire/emergency, our designated assembly point is in the car park. Emergency services must be able to enter the site, gain access to the nursery and be able to turn around if required. Vehicles parked in the middle of the car park or blocking access routes could delay an emergency response and compromise the safety of everyone on site.

Could you please remind families that:

- If there are no available marked parking spaces, they must leave the car park and park elsewhere
- Vehicles must only park within marked parking bays
- Vehicles must not park in the middle of the car park or block access routes
- Vehicles must not stop or park outside the nursery entrance
- Drivers should proceed slowly and with extra care, as young children are walking, using scooters and riding bikes through the area

If the situation does not improve, we will have to review whether we can continue to keep the gates open for community use, but the safety of our children, families, staff, visitors and emergency services must always come first.

Thank you for your understanding and support.

Kind regards,

**S. Atkins**

Owner, Safe Haven Day Nursery'

## Vacancy – Cleaner

We have a vacancy for a permanent, part-time Cleaner here in school (2 hours per day).

See our website for further information: [Leas Park Junior School - Vacancies](#)

Please share with anyone who may be interested in working here with us.


# Year 6 Presentation Evening

This year, our Year 6 Presentation Evening will be held on Tuesday 21<sup>st</sup> July, in the school hall.

Further information will be sent out on Dojo so please see keep your eye out for this over the coming days/weeks.

## Letter re. Immunisations

Please see the letter below with regard to upcoming changes to the consent process for school vaccinations:

  
Nottinghamshire School Aged  
Immunisation Service

**We're changing the consent process for school vaccinations**

Dear parent or guardian,

We're writing to let you know about a change to how you'll be asked to give consent for school vaccinations. From July, The Nottinghamshire NHS school age immunisation service will contact parents and guardians directly to ask for consent. You'll receive an email or text message from the NHS with a link to an online consent form. You can use the online form to:

- give consent for your child to be vaccinated
- say you do not want your child to be vaccinated
- update your contact details if needed

Filling in the form will be quick and easy. It's important to respond, even if you do not want your child to be vaccinated.

**What information the school will share**

To allow the NHS immunisation team to contact you, the school will give them:

- your child's name, date of birth, postcode and school class
- your email address and mobile phone number

These details will only be used to send messages about your child's vaccinations. You can find more information about the school age vaccination schedule on the NHS website.

**Keeping your information safe**

Your personal data will be stored securely in line with NHS data security standards. Only authorised members of the immunisation team and the digital service team can access your contact details.


**If you have any questions**

If you have questions about vaccinations or the consent form, please contact the immunisation team at: [immunisations.Nottinghamshire@intrahealth.co.uk](mailto:immunisations.Nottinghamshire@intrahealth.co.uk)

If you have questions about how the school shares information, please contact us.

Kind regards

On behalf of the Nottinghamshire Immunisation Team

Service provided by:  
  
IntraHealth

# Reminders, messages and additional news – please read!!

## Weather preparation

During the winter months please ensure your child brings a warm, waterproof coat to school every day. When the weather improves, please remember to apply suncream before school and to bring a refillable water bottle and sun hat each day. All items of clothing should be labelled.

## Late collection

If you are aware that you are going to be late to collect your child at the end of the school day, please let us know in plenty of time and **before** the end of school at 3:15pm. When calls are received close to the end of school, it can be difficult for reception staff to get to the classrooms before the children leave.

## Changing dinners

Please note that the school office will need **one weeks' notice**, if you wish to change your child from school meals to sandwiches, or vice versa. Thank you.

## Pupil Information

Please ensure school have all your current contact information and that it is up to date. If you change your name, telephone number or address, please let school know as soon as possible and ensure that we always have **at least two separate emergency contacts** for your child.

## Pupil Lateness and Absence

School starts at **8:45am**. Please ensure your child arrives on time and with all the uniform, equipment, lunch and snacks that they require for their day. If you are going to be late arriving to school, or if your child is not in full school uniform, please contact us on 01623 477629 to let us know why. If you know in advance that your child will not be in or will be late in the following day, the message system regarding pupil absence can be accessed at any time outside of office hours via our telephone number.

If your child needs to be out of school for any reason, please complete a 'Withdrawal from Learning Form' and submit to the school office, for authorisation at the discretion of the head teacher. These forms can be accessed via this link: <https://forms.office.com/e/6JJqkm1EqM> or paper copies are available from the leaflet stand in reception or in the office.

## Illness & Medications

If you do need to keep your child off school on a school day, please contact the school office on 01623 477629 **before 9:00am on the day they are due to be off**.

If you wish for your child to be given medication whilst at school, please complete and submit the form via this link: <https://forms.office.com/e/afhPeAWWgU>

**All medication needs to be handed in to school and collected by an adult.**

## Staff Car Park

Please note the staff car park is for use **by staff only**. We have very limited space and quite often staff need to leave site and return at short notice. Extra vehicles can make manoeuvring dangerous and can also mean that spaces aren't available for staff who need to be here. Thank you for your understanding.

## Nut free school

In line with NCC policy regarding nut allergies, we do not allow any type of nuts including peanuts in school - either in packed lunches or in snacks. This also includes any nut-based products including Nutella, other sandwich spreads containing nuts and any cereal bars that may contain nuts.

Thank you for your support.

## Snacks

Children are allowed to bring a healthy snack in with them to have during break time, for example fruit or vegetables. Please do not send in grab bags/multi packs of crisps, biscuits or sweets. Please ensure any food sent into school is nut free. Thank you for your co-operation.

## Jewellery

Children should not be wearing jewellery to school, with the exception of a watch (not a smartwatch) and small stud earrings, which will need to be removed or covered during PE lessons. This is due to Health and Safety and the possibility of loss or damage.

# Leas Park Awards

Reach

for the

Stars

## Attendance Award

The Attendance Award for w/c **22/06/2026** goes to **Class 3B** with **93.4%**

Our current Attendance Policy can be found on our school website.

The whole school attendance percentage this academic year to date is **95.4%** - the national target is **96%**

**Please help support us in raising our attendance.**

**Thank you!**

### Eco Class



Winner of the Week:

**50**



### Golden Tickets

Class	Amount collected this week:	Running total so far this half term:
3B	0	4
3P	0	4
4C	0	2
4G	0	0
5H	4	10
5J	1	5
6A	0	0
6C	1	3
6P	0	3

Winner of the Week:

**5H**

Overall winner this half term so far:

**5H**

### Leas Park Shining Stars

Class	Name
3B	Edward C
3P	James W
4C	Frank D
4G	Bella G
5H	Grace B
5J	James C
6A	Alex F
6C	Billy T
6P	Sid B

### Zones of Regulation Champion

Class	Name
3B	Pixie W
3P	Oliver L
4C	Phoebe-Grace S
4G	Theo S
5H	Alfie T
5J	Nyla B
6A	Joey W
6C	Sophie S
6P	Joseph O

### Maths Stars

Class	Name
3B	Charlie D
	Evie B
3P	Zac G
	Amelia H
4C	Ivie M
	Zavian A
4G	Lorenzo D
	Reuben M
5H	Lyra W
	Charlotte D
5J	Annie B
	Fearne M
6A	Joshua S
	Ivy T
6C	Aiden G
	Daisy M
6P	Coen D
	Pyper T



### Pen Licences

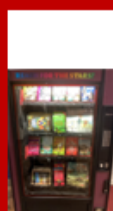
Class	Name
5H	Peyton F
5H	Lyra W

### Reading Certificates

Class	Name	No. of reads	Award given
3B	Emily B	200	Ruby
3P	Zac G	75	Diamond
3P	Jade J	200	Ruby
3P	Elodie G	200	Ruby
4C	Amelia M	25	Bronze
4C	Phoebe R	75	Diamond
4C	Arla D	200	Ruby
4G	Finley-Anthony B	50	Silver
4G	Ellis N	150	Platinum
6A	Ava-Mae L	75	Diamond
6A	Lyla E	75	Diamond
6C	Daisy M	250	Emerald
6C	Sophie S	250	Emerald
6P	Logan S	25	Bronze
6P	Coen D	250	Emerald



### Book Vending Machine



#### Lower School Winner


Class	Name
4G	Ellis N

#### Upper School Winner

Class	Name
6A	Joshua S



### Dojo

	Class	Name	Amount awarded
	3B	Charlie Fidler	150
	3P	Daisy Green	150
	3P	Taylor Roberts	150
	4C	Cody Buckley	100
	4C	Grayson Evans	100
	4G	Vyga Perumthodi	75
	4G	Elliott Rodriguez-Garcia	75
	6C	Freya Bowman	75
	6C	Sam Overton	75
	6C	Pippa Bailey	100
	6P	Sid Bibin	75
	6P	Brody Clayton	100
	6P	Jenson Matthews	100

### Dinner Winners

	Class	Name
	3B	Eissa J
	3P	
	4C	Oscar H
	4G	Alfie W
	5H	Esmee R
	5J	Scarlett S
	6A	Fearne C
	6C	
	6P	Devon T



# Dates for your Diary

Please see below our main 'diary dates' so far for the academic year. We hope this will help with your diary planning.

**\*\*Please note these dates are subject to change and if this should be the case we will give as much notice as possible\*\***

## **Inset Days (school closed to children):**

Monday 27<sup>th</sup> July 2026

**Thursday 2<sup>nd</sup> July** – Sports Day – Year 3 & 4 - 9.30am – 11.00am

**Thursday 2<sup>nd</sup> July** – Sports Day – Year 5 & 6 - 1.30pm – 3.00pm

**Friday 3<sup>rd</sup> July** – Summer fayre donation non-uniform day

**Wednesday 8<sup>th</sup> July – Friday 10<sup>th</sup> July** – Year 6 transition dates to Manor

**Thursday 9<sup>th</sup> July** – Year 2 Meet the Teacher

**Friday 10<sup>th</sup> July** – Year 2 Meet the Teacher

**Wednesday 15<sup>th</sup> July** – Summer Fayre

**Friday 17<sup>th</sup> July** – Reports home

**Tuesday 21<sup>st</sup> July** – Year 6 Presentation Evening

**Wednesday 22<sup>nd</sup> July** – Picnic Day

**Thursday 23<sup>rd</sup> July** – Talent Show

**Friday 24<sup>th</sup> July** – Toy Day

**Monday 27<sup>th</sup> July** – INSET day – school closed to children

**Wednesday 2<sup>nd</sup> September** – School re-opens to children

**Friday 20<sup>th</sup> November** – INSET day – school closed to children

**Thursday 25<sup>th</sup> March 2027** – INSET day – school closed to children

**Friday 28<sup>th</sup> May 2027** – INSET day – school closed to children

**Wednesday 28<sup>th</sup> July 2027** – INSET day – school closed to children



UK Health  
Security  
Agency

## Beat the heat

### Plan ahead



Check the weather forecast and the news



Plan ahead to avoid the heat



Schedule activities to cooler times of the day

### Keep yourself cool



Drink plenty of fluids and avoid excess alcohol



Wear sunscreen, a hat, and sunglasses



Cool your skin with water and slow down

### Find somewhere cool



Close blinds and curtains during the day



Go indoors or outdoors, whichever feels cooler



Avoid closed spaces like stationary cars

### Be safe



Be on the lookout for signs of heat related illness



Look after yourself and check in with others



Stay safe when swimming



Get help. Call NHS 111 or in an emergency 999

For more information go to: [gov.uk/ukhsa/beat-the-heat](https://gov.uk/ukhsa/beat-the-heat)


# HEAT-RELATED ILLNESSES



## Heat Exhaustion

Heat exhaustion occurs when the body overheats, but it can cool itself down. It does not usually need emergency medical attention if it cools down within 30 minutes.

### Look for

-  tiredness, dizziness and/or weakness
-  headache
-  muscle cramps
-  feeling/being sick
-  heavy sweating
-  intense thirst
-  fast breathing
-  high temperature

### Action

- move to a cooler place in the shade
- remove all unnecessary clothing
- drink a cool drink (not alcohol)
- cool skin – spray or sponge with cool water
- stay with them

Anyone affected should start to cool down and feel better within **30 minutes**.

If you are concerned about symptoms, or they are worsening, contact **NHS 111**.



FIND COOL PLACE    DRINK WATER    COOL SKIN    DIAL 111

## Heatstroke

Heatstroke occurs when the body is no longer able to cool itself down and its temperature becomes dangerously high.



### Look for

-  still unwell after 30 minutes of resting
-  loss of consciousness
-  very high temperature
-  confusion
-  lack of co-ordination
-  fast heartbeat
-  fast breathing or shortness of breath
-  hot skin that is not sweating
-  seizures

### Action

**Heatstroke is a medical emergency.**

- dial 999 and then try to cool them down
- move to a cool place
- remove all unnecessary clothing
- cool skin – spray or sponge with cool water
- put them in the recovery position if they lose consciousness while waiting for help
- stay with them



DIAL 999    FIND COOL PLACE    COOL SKIN    RECOVERY POSITION



**In an emergency, or if you think someone has heatstroke, dial 999.**



**Saturday 4th July**

Debdale Sports Park, Mansfield (NG19 7NS)

# MANSFIELD FOOTBALL EXPERIENCE

10:00am - 11:25am - FREE EVENT

11:30am - 1:00pm - FREE EVENT

Whether you're looking to sharpen your skills or try something new, our 90 minute football workshops offer a fun and competitive environment for players of all abilities.

**PLUS it's FREE!**

Scan QR to book or for more info



Book online at [www.OTBCoaching.co.uk](http://www.OTBCoaching.co.uk) or WhatsApp 07803 1234 11



# SUMMER School



Open to ages 8-16



W/C 10 August 10am - 3pm, Monday- Friday



£75 early bird offer, £100 after 5th July 2026.

To book your place, please contact [learning@mansfield.gov.uk](mailto:learning@mansfield.gov.uk) requesting a sign up form.



Looking for something fun, creative, and confidence-building this summer?



Our Summer School is back at the Palace Theatre!

Inspired by the magic of musicals, this week is perfect for children who love to sing, dance, act, or simply would like to try something new.

Throughout the week, young performers will explore the world of a true triple threat. Led by friendly industry professionals, sessions include West End inspired choreography, vocal training and acting sessions with a qualified LAMDA drama teacher. The week will be filled with engaging activities designed to build skills and confidence.

No experience is needed, just enthusiasm and a willingness to get involved. Whether your child already loves musicals or is discovering them for the first time, they'll be supported every step of the way while making new friends and learning new skills.

By the end of the week, they'll have grown in confidence, creativity, and self-expression. All while enjoying the excitement and storytelling of musical theatre.

Spaces are limited, so secure your child's place today and give them a summer filled with music, movement, and fun!



MADE BY PARENTS FOR PARENTS

# UNIFORM DIRECT

**BUY NOW!**



Ordering for September? Allow plenty of time **Buy Now!**

[www.uniform-direct.com](http://www.uniform-direct.com)

**Order Online 24/7**



MADE BY PARENTS FOR PARENTS

Official School Uniform for  
**Leas Park Junior School**



## DAY WEAR

Sweatshirt from **£8**

Cardigan from **£9**

Polo Shirt from **£5**

School Trousers from **£6**

School Skirt from **£7**

## PE WEAR

PE T-Shirt from **£4.50**

PE Shorts from **£4**

## ESSENTIAL ITEMS

Printed Name Tapes **£3.50**



Ordering for September? **BUY NOW!**



April - June

Best time to order



July

Expect delays



August - September

Not guaranteed for back to school!



Free Delivery Over £29

[www.uniform-direct.com](http://www.uniform-direct.com)